



**NEW!**

AVAILABLE IN CORTEN  
STEEL AND  
BLACK-COATED  
STEEL

# multi edge FLORA

Stylish and robust;  
Steel planters

*The Multi-Edge FLORA is a high-quality steel planter made up of 4 separate panels. The planter is easy to assemble thanks to the click-and-go system, without the need for additional tools. The Multi-Edge FLORA panels are 1 mm thick, and the curved edges provide a solid and elegant appearance. The Multi-Edge FLORA is available in various sizes in corten steel or black-coated steel, suitable for any garden.*

✓ Made of high-quality steel

✓ Stable and lightweight

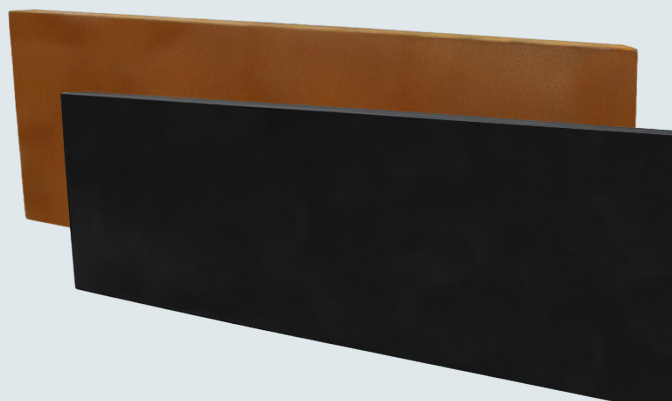
✓ Easy connecting system

✓ Available in 6 sizes



## A planter for every garden

*The Multi-Edge FLORA planter consists of 4 separate panels that are easy to assemble. Each panel is made from a single bent sheet, ensuring high stability and a sleek appearance. The panels are available in 3 sizes that can be combined (two-by-two), allowing for 6 different planter sizes. Whether large or small, the Multi-Edge FLORA is perfect for any outdoor space!*



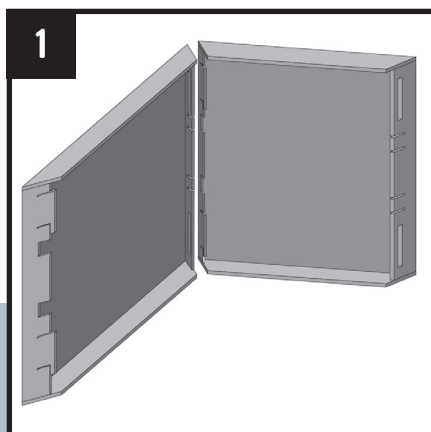
SMART GARDEN EDGING SOLUTIONS

multi edge

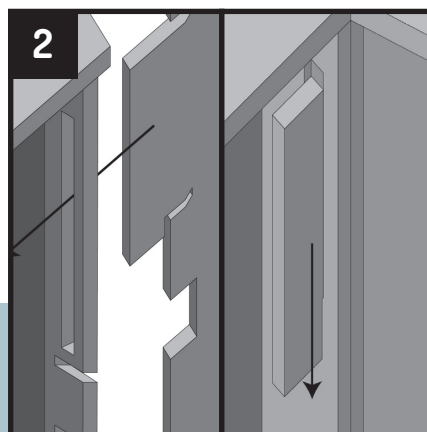
# Installation instructions



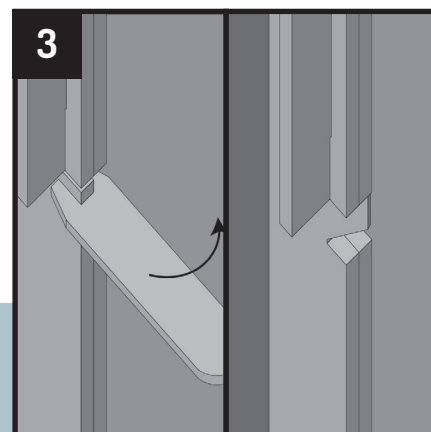
Keep out of reach of children.  
Wearing gloves is advised.



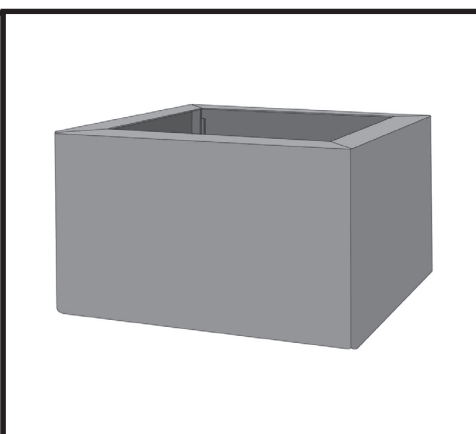
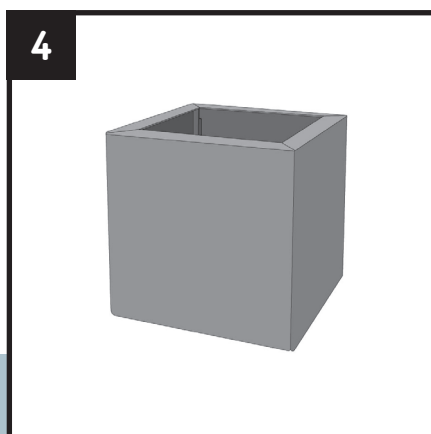
Each panel has two different sides. One side has two hooks and notches, the other has two slots and clips. Place panels with one of their sides facing each other.



Insert the hooks of one panel into the slots of the other and slide down to connect.

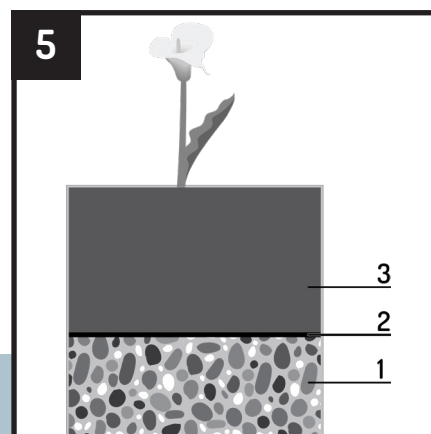


To ensure the panels don't come loose when moved, use the provided bending tool to bend the clips over the notches.



Repeat steps 1 to 3 for the remaining panels until all are connected. The planter should now look like the images above and is ready to be placed and filled.

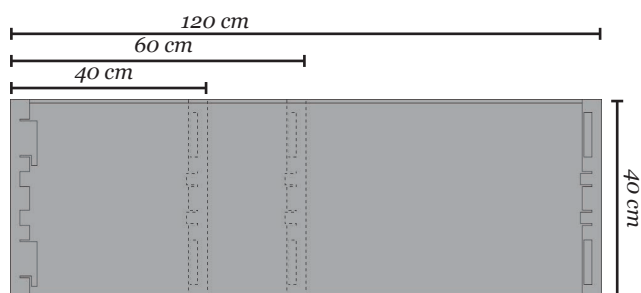
**Please note!** The corten steel planter does not yet have a rust layer upon delivery. The rust layer develops over time, depending on weather conditions.



When placing the planter, it is recommended to fill it in layers as shown above:

1. Gravel or pebbles
2. Weed control fabric
3. Soil

## Planter panels



## Bending tool



Each planter comes with one bending tool included.

multi edge  
**FLORA**